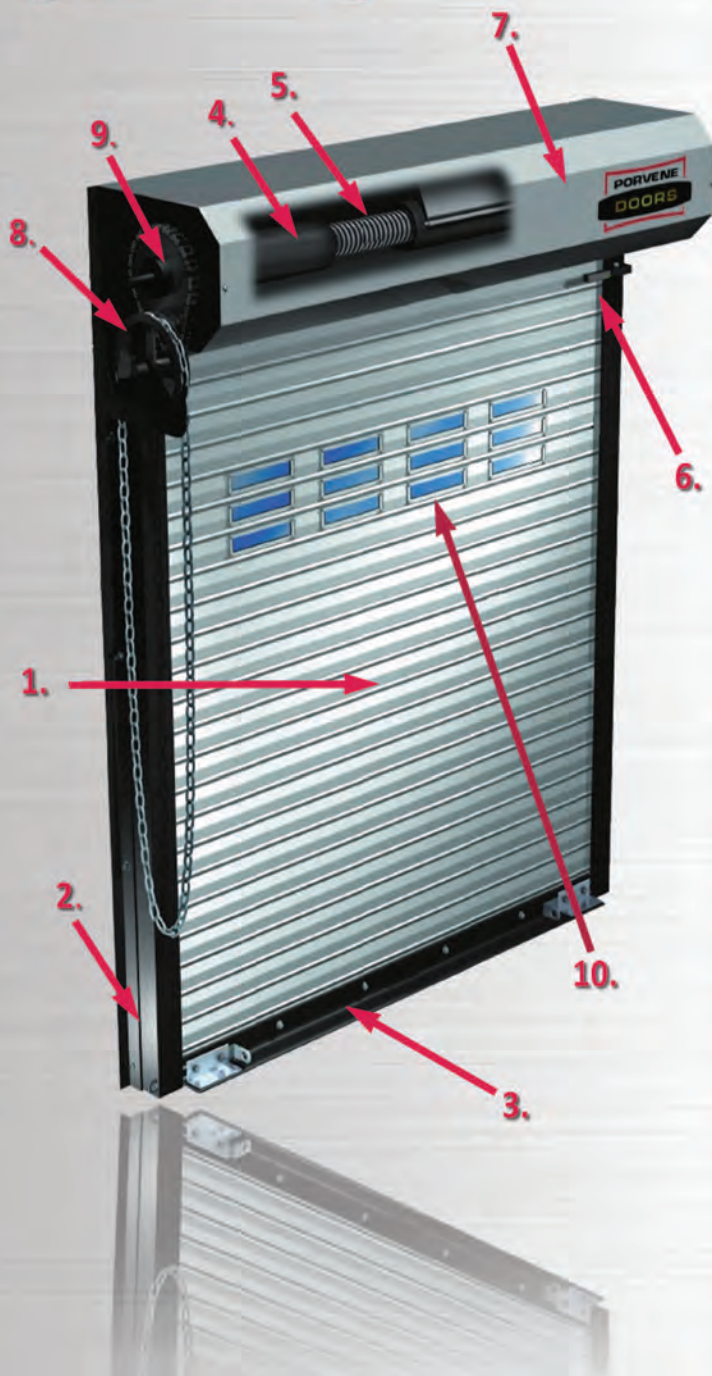




The Rolling Steel Service Door MODEL 400



Standard Features:

1. Steel Slat Curtain

All slats are manufactured from the highest quality galvanized steel with a baked enamel prime finish. Available in 18 ga., 20 ga., 22 ga., or 24 ga. flat or curved slats.

2. Guides

Minimum 3/16" structural steel angle. (Roll formed guides on 24 gauge doors up to 14'0"x14'0".)

3. Bottom Bar

Two 2"x2"x1/8" thick structural steel angles form a rugged bottom bar assembly. A rubber bottom astragal helps to conform to floor irregularities and helps guard against weather, dirt, insects, and rodents. Slide locks optional.

4. Pipe Barrel

Continuous 6" minimum diameter pipe to support the steel door curtain with no more than .03" of deflection per foot of width.

5. Counterbalance

Helical torsion springs are oil tempered and grease-packed. Springs are designed for 20,000 cycles minimum and are accurately calculated for every door using Porvene's uniquely designed "Door Dynamometer."

6. Door Stops

Stops are located on the inside and outside of the guides for added safety.

7. Hood

24 Gauge galvanized steel with a baked enamel prime finish hood that forms an enclosure at the top of the door.

8. Chain Hoist

Heavy duty #50 roller chain and sprockets combined with a smooth hand-chain provides for safe and efficient operation. Removal of chain hoist makes the door electrical operation ready without further modifications or cost.

9. Sealed Ball Bearing

Self-aligning to allow free rotation of the barrel.

10. Optional Vision Lites

Model 400: The Rolling Steel Service Door

Porvene's 400 Series Service Doors offer 24/22/20/18 gauge slats for additional strength. Our new and innovative slat design reduces the snapping sounds that come from metal to metal contact common to other rolling steel slat doors when the door is opening and closing. Powder coating in a wide variety of colors is also available. This complete product line comes standard with chain operation and can be upgraded to electric operation.

Other Options:

Inverted curtain for exterior mounting
Slope strip (for sloped floors)
Powder coating
Cylinder lock
Cast iron endlocks/windlocks
Higher than 20 P.S.F. wind loading available
High cycle options to 150,000 cycles
Electric interlocks
Contact factory for other available options



Model 400 Options



Pass Door Provides roll-up and pass door convenience while maintaining access to full opening width



Wicket Door For personal access and added efficiency and convenience



Flat Slat



Vented Slat



Curved Slat



Screened Slat



Vision Slat



Malleable Endlocks and Windlocks



Double Reduction Drive: For easy operation on larger doors



Thru-Wall Chain Drive: This option is used when operation is desired from the opposite side of the wall

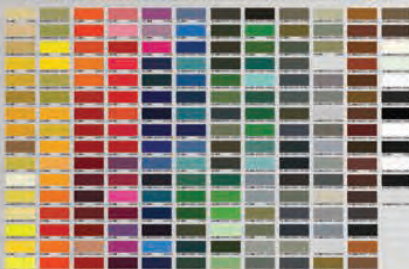


Brush & Vinyl Weather Seal Guides



Safety Break Bearing: Prevents door from free falling in the event of counterbalance failure

PORVENE DURA-COAT COLORS



Dura-Finish Paint Process

The Porvene process is designed to give a longer life with less maintenance and much better protection against the elements such as weather and dust. Our method produces one of the best systems in our industry for a longer lasting and more maintenance free finish. Our system produces one of the thickest top coat finishes in our industry.



DISTRIBUTED BY: